

# the blinding access of the grace of flesh

clarinet in B $\flat$  part

Chris Dench

CHRIS  
DENCH

1

B♭ CLARINET

[FOR USE WHEN C CLARINET  
IS NOT AVAILABLE]

NODE

Handwritten musical score for Clarinet in Bb. The score is written on a single staff with a treble clef. It begins with a key signature of one flat (Bb) and a time signature of 4/4. The tempo is marked as 73. The score includes a first ending bracket and a final 3/4 time signature. The notation includes various note values, rests, and dynamic markings such as *pp* and *mf*.

Handwritten musical score for "The Rose Tree". The score is written on a single staff with a treble clef and a key signature of one flat (B-flat). The time signature is 3/4. The score is divided into sections labeled B and C. Section B starts with a tempo marking of 68 and a dynamic marking of ff. Section C starts with a tempo marking of 88 and a dynamic marking of mf. The score includes various musical notations such as notes, rests, and dynamic markings (ppp, ff, mf, f).

Handwritten musical score for 'The Rose Tree'. The score is written on a single staff with a treble clef and a key signature of one sharp (F#). The tempo is marked 'Allegretto' and the time signature is '3/4'. The piece begins with a treble clef and a key signature of one sharp (F#). The tempo is marked 'Allegretto' and the time signature is '3/4'. The score is divided into two systems. The first system contains measures 1 through 8, and the second system contains measures 9 through 16. The music features a variety of note values, including eighth, sixteenth, and thirty-second notes, as well as rests. There are several dynamic markings, including 'mf' (mezzo-forte), 'f' (forte), and 'pp' (pianissimo). The score is written in a clear, legible hand, with some corrections and annotations visible. The piece concludes with a double bar line in measure 16.

Handwritten musical score for a piano piece, featuring complex rhythmic patterns, dynamic markings (p, pp, mf, ff, f, f/z), and articulation (accents, slurs). The score is written on a single staff with a treble clef and a key signature of one sharp (F#). It includes a tempo marking of 66 and a section labeled (b).

2

## DENCH: BAGF/CLAR IN Bb

Handwritten musical notation for Bagf/Clarinet in Bb, measures 25-34. The notation includes a treble clef, a key signature of one flat (Bb), and a tempo marking of  $\text{♩} = 75$ . The music features a series of eighth and sixteenth notes, with dynamic markings *mf* and *ff*. A box labeled 'E' is present above the staff. The notation includes various rhythmic markings such as  $5:4$ ,  $5:6$ , and  $3:2$ .

Handwritten musical notation for Bagf/Clarinet in Bb, measures 35-44. The notation includes a treble clef, a key signature of one flat (Bb), and a tempo marking of  $\text{♩} = 75$ . The music features a series of eighth and sixteenth notes, with dynamic markings *ff* and *mf*. The notation includes various rhythmic markings such as  $5:4$  and  $3:2$ .

Handwritten musical notation for Bagf/Clarinet in Bb, measures 45-54. The notation includes a treble clef, a key signature of one flat (Bb), and a tempo marking of  $\text{♩} = 52$ . The music features a series of eighth and sixteenth notes, with dynamic markings *mf* and *f*. A box labeled 'F' is present above the staff. The notation includes various rhythmic markings such as  $7:8$ ,  $3:4$ , and  $3:2$ .

Handwritten musical notation for Bagf/Clarinet in Bb, measures 55-64. The notation includes a treble clef, a key signature of one flat (Bb), and a tempo marking of  $\text{♩} = 52$ . The music features a series of eighth and sixteenth notes, with dynamic markings *mf* and *f*. The notation includes various rhythmic markings such as  $5:4$ ,  $9:8$ , and  $3:2$ .

DENCH: BAGF/CLAR IN Bb

3

Handwritten musical notation for measures 9-10. The notation is on a single staff with a treble clef and a key signature of one flat (Bb). The time signature is 5/4. The notation includes various rhythmic values and dynamic markings. A large wavy line is drawn across the staff after measure 10.

Measures 9-10. Key signature: Bb. Time signature: 5/4. Dynamic markings: *pp*, *p*, *pppp*. Rhythmic markings: 9:8, 3:2, 5:4, 5:4.

Handwritten musical notation for measures 10-11. The notation is on a single staff with a treble clef and a key signature of one flat (Bb). The time signature is 5/4. The notation includes various rhythmic values and dynamic markings. A large wavy line is drawn across the staff after measure 11.

Measures 10-11. Key signature: Bb. Time signature: 5/4. Dynamic markings: *pppp*, *p*, *pppp*. Rhythmic markings: 5:4, 3:2, 5:4, 2/4, 5/4.

Handwritten musical notation for measures 11-12. The notation is on a single staff with a treble clef and a key signature of one flat (Bb). The time signature is 5/4. The notation includes various rhythmic values and dynamic markings. A large wavy line is drawn across the staff after measure 12.

Measures 11-12. Key signature: Bb. Time signature: 5/4. Dynamic markings: *pppp*. Rhythmic markings: 3/8, 15/4.

Handwritten musical notation for measures 12-13. The notation is on a single staff with a treble clef and a key signature of one flat (Bb). The time signature is 5/4. The notation includes various rhythmic values and dynamic markings. A large wavy line is drawn across the staff after measure 13.

Measures 12-13. Key signature: Bb. Time signature: 5/4. Dynamic markings: *Subito meno mosso*, *pppp*. Rhythmic markings: 3/4.

Handwritten musical notation for measures 13-14. The notation is on a single staff with a treble clef and a key signature of one flat (Bb). The time signature is 5/4. The notation includes various rhythmic values and dynamic markings. A large wavy line is drawn across the staff after measure 14.

Measures 13-14. Key signature: Bb. Time signature: 5/4. Dynamic markings: *sfz*. Rhythmic markings: 5:4, 9:8, 5:4, 5:4, 3.

4

DENCH: BAGF / CLAR IN B $\flat$ 

Handwritten musical notation for measures 14 and 15. Measure 14 (P.14) features a treble clef, a key signature of one flat, and a 3/4 time signature. It includes a triplet of eighth notes, a five-measure rest, and a fermata. Measure 15 (P.15) features a treble clef, a key signature of one flat, and a 3/4 time signature. It includes a forte (f) dynamic, a 7:6 ratio, a fermata, and a wavy line indicating a tremolo or vibrato.

Handwritten musical notation for measures 15 and 16. Measure 15 (P.15) features a treble clef, a key signature of one flat, and a 3/4 time signature. It includes a forte (f) dynamic, a 7:8 ratio, a fermata, and a wavy line indicating a tremolo or vibrato. Measure 16 (P.16) features a treble clef, a key signature of one flat, and a 3/4 time signature. It includes a forte (f) dynamic, a 7:8 ratio, a fermata, and a wavy line indicating a tremolo or vibrato.

Handwritten musical notation for measures 16 and 17. Measure 16 (P.16) features a treble clef, a key signature of one flat, and a 3/4 time signature. It includes a forte (f) dynamic, a 3:2 ratio, a fermata, and a wavy line indicating a tremolo or vibrato. Measure 17 (P.17) features a treble clef, a key signature of one flat, and a 3/4 time signature. It includes a forte (f) dynamic, a 3:2 ratio, a fermata, and a wavy line indicating a tremolo or vibrato.

Handwritten musical notation for measures 17 and 18. Measure 17 (P.17) features a treble clef, a key signature of one flat, and a 3/4 time signature. It includes a forte (f) dynamic, a 3:2 ratio, a fermata, and a wavy line indicating a tremolo or vibrato. Measure 18 (P.18) features a treble clef, a key signature of one flat, and a 3/4 time signature. It includes a forte (f) dynamic, a 3:2 ratio, a fermata, and a wavy line indicating a tremolo or vibrato.

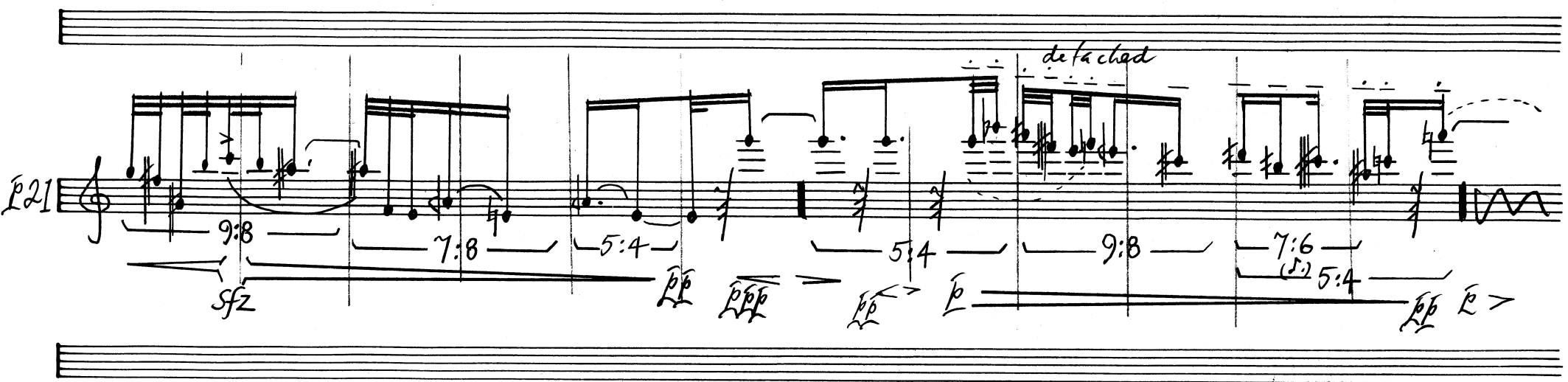
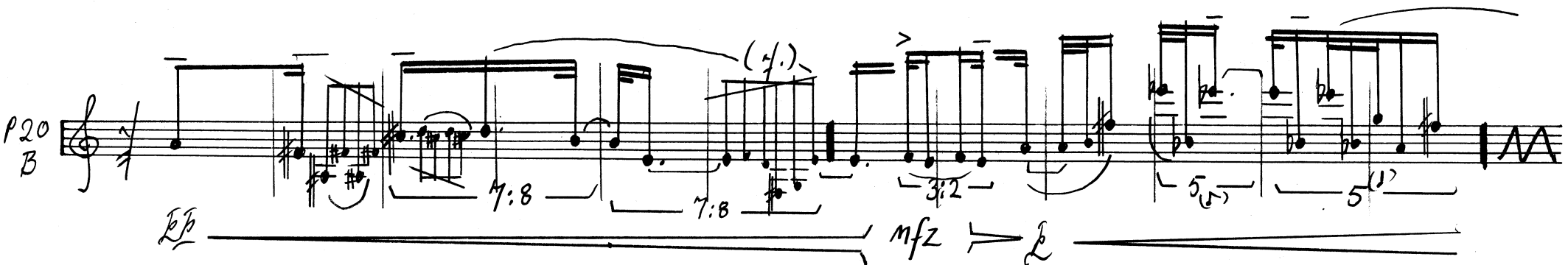
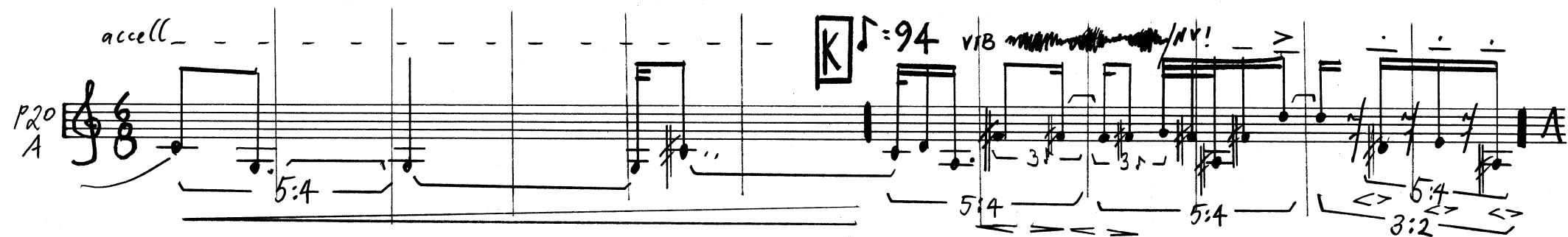
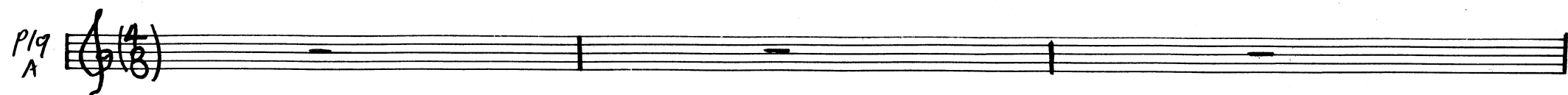
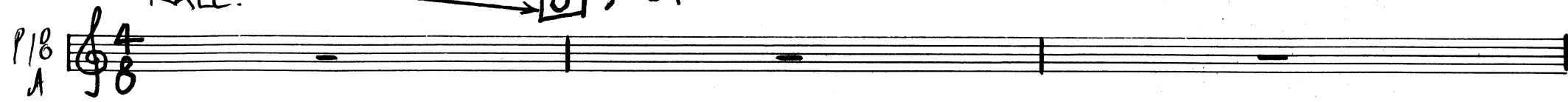
Handwritten musical notation for measures 18 and 19. Measure 18 (P.18) features a treble clef, a key signature of one flat, and a 3/4 time signature. It includes a forte (f) dynamic, a 3:2 ratio, a fermata, and a wavy line indicating a tremolo or vibrato. Measure 19 (P.19) features a treble clef, a key signature of one flat, and a 3/4 time signature. It includes a forte (f) dynamic, a 3:2 ratio, a fermata, and a wavy line indicating a tremolo or vibrato.

Handwritten musical notation for measures 19 and 20. Measure 19 (P.19) features a treble clef, a key signature of one flat, and a 3/4 time signature. It includes a forte (f) dynamic, a 3:2 ratio, a fermata, and a wavy line indicating a tremolo or vibrato. Measure 20 (P.20) features a treble clef, a key signature of one flat, and a 3/4 time signature. It includes a forte (f) dynamic, a 3:2 ratio, a fermata, and a wavy line indicating a tremolo or vibrato.

# DENCH: BAGF/CLAR IN Bb

5

RALL. J = 84



6

# DENCH: BAGF/CLAR IN Bb

Handwritten musical notation for measures 22A and 22B. The notation includes a treble clef, a key signature of one flat (Bb), and a 9:8 time signature. The melody features a series of eighth notes, a half note, and a quarter note, followed by a rest. A dynamic marking of *pp* is present. A tempo marking of *poco* is also indicated. A bracketed section of the melody is marked with a 3:2 ratio. A final measure shows a wavy line, indicating a glissando or a sustained note.

Handwritten musical notation for measures 23A and 23B. The notation includes a treble clef, a key signature of one flat (Bb), and a 5:4 time signature. The melody features a series of eighth notes, a half note, and a quarter note, followed by a rest. A dynamic marking of *pp* is present. A tempo marking of *poco* is also indicated. A bracketed section of the melody is marked with a 3:2 ratio. A final measure shows a wavy line, indicating a glissando or a sustained note.

Handwritten musical notation for measures 24A and 24B. The notation includes a treble clef, a key signature of one flat (Bb), and a 5:4 time signature. The melody features a series of eighth notes, a half note, and a quarter note, followed by a rest. A dynamic marking of *pp* is present. A tempo marking of *poco* is also indicated. A bracketed section of the melody is marked with a 3:2 ratio. A final measure shows a wavy line, indicating a glissando or a sustained note.

Handwritten musical notation for measures 25A and 25B. The notation includes a treble clef, a key signature of one flat (Bb), and a 5:4 time signature. The melody features a series of eighth notes, a half note, and a quarter note, followed by a rest. A dynamic marking of *pp* is present. A tempo marking of *poco* is also indicated. A bracketed section of the melody is marked with a 3:2 ratio. A final measure shows a wavy line, indicating a glissando or a sustained note.

Handwritten musical notation for measures 26A and 26B. The notation includes a treble clef, a key signature of one flat (Bb), and a 5:4 time signature. The melody features a series of eighth notes, a half note, and a quarter note, followed by a rest. A dynamic marking of *pp* is present. A tempo marking of *poco* is also indicated. A bracketed section of the melody is marked with a 3:2 ratio. A final measure shows a wavy line, indicating a glissando or a sustained note.

Handwritten musical notation for measures 27A and 27B. The notation includes a treble clef, a key signature of one flat (Bb), and a 5:4 time signature. The melody features a series of eighth notes, a half note, and a quarter note, followed by a rest. A dynamic marking of *pp* is present. A tempo marking of *poco* is also indicated. A bracketed section of the melody is marked with a 3:2 ratio. A final measure shows a wavy line, indicating a glissando or a sustained note.

Handwritten musical notation for measures 28A and 28B. The notation includes a treble clef, a key signature of one flat (Bb), and a 5:4 time signature. The melody features a series of eighth notes, a half note, and a quarter note, followed by a rest. A dynamic marking of *pp* is present. A tempo marking of *poco* is also indicated. A bracketed section of the melody is marked with a 3:2 ratio. A final measure shows a wavy line, indicating a glissando or a sustained note.

Handwritten musical notation for measures 29A and 29B. The notation includes a treble clef, a key signature of one flat (Bb), and a 5:4 time signature. The melody features a series of eighth notes, a half note, and a quarter note, followed by a rest. A dynamic marking of *pp* is present. A tempo marking of *poco* is also indicated. A bracketed section of the melody is marked with a 3:2 ratio. A final measure shows a wavy line, indicating a glissando or a sustained note.

Handwritten musical notation for measures 30A and 30B. The notation includes a treble clef, a key signature of one flat (Bb), and a 5:4 time signature. The melody features a series of eighth notes, a half note, and a quarter note, followed by a rest. A dynamic marking of *pp* is present. A tempo marking of *poco* is also indicated. A bracketed section of the melody is marked with a 3:2 ratio. A final measure shows a wavy line, indicating a glissando or a sustained note.

DENCH: BAGF / CLAR IN Bb

7

Handwritten musical notation for P30 A. The staff shows a treble clef, a key signature of one flat (Bb), and a 9/8 time signature. The notation includes a series of eighth notes, a half note, and a quarter note, followed by a wavy line indicating a tremolo. Above the staff, there are four triangles and a bracket. Below the staff, there is a bracket and the text "PREP-".

Handwritten musical notation for P30 B. The staff shows a treble clef, a key signature of one flat (Bb), and a 12/8 time signature. The notation includes a series of eighth notes, a half note, and a quarter note, followed by a wavy line indicating a tremolo. Above the staff, there is a bracket and the text "RALL.". Below the staff, there is a bracket and the text "PREP-".

Handwritten musical notation for P31. The staff shows a treble clef, a key signature of one flat (Bb), and a 4/8 time signature. The notation includes a series of eighth notes, a half note, and a quarter note, followed by a wavy line indicating a tremolo. Above the staff, there is a bracket and the text "Γ=80 (CIRCA)". Below the staff, there is a bracket and the text "mf".

Handwritten musical notation for P32 A. The staff shows a treble clef, a key signature of one flat (Bb), and a 6/8 time signature. The notation includes a series of eighth notes, a half note, and a quarter note, followed by a wavy line indicating a tremolo. Above the staff, there is a bracket and the text "fz". Below the staff, there is a bracket and the text "pp marcato!".

Handwritten musical notation for P32 B. The staff shows a treble clef, a key signature of one flat (Bb), and a 6/8 time signature. The notation includes a series of eighth notes, a half note, and a quarter note, followed by a wavy line indicating a tremolo. Above the staff, there is a bracket and the text "fz". Below the staff, there is a bracket and the text "pp marcato!".



8

## DENCH: BAGF / CLAR IN Bb

33A

pp sfz 3 mf p sffz/mf (sim.) (= W)

33B

pp p fff mf

34

p f (v) 9 15

35

SCHEMA

ff f

# DENCH: BAGF/CLAR IN B $\flat$

9

36

37

38

39

40

41

42 (mf)

43 (p)

44  $\text{♩} = 88$  (E#)

45 (mf)

46 (mf)

47 (=C#)

# DENCH: BAGF / CLAR IN Bb

11

48

♩ = 84

*p-* *ffz* *mf-*

49

*mf* *f (poco)* *ff*

50

*pp* *ffz* *f* *ff* *f* *ff (meno)* *(mf)*

51

*mf* *pp* *f*

52

*mf* *f (pesante)* *f*

Handwritten musical notation for measures 52-53. Measure 52 starts with a treble clef, key signature of one flat, and a 7/4 time signature. It contains a half note G4, a quarter note A4, and a half note B4. Measure 53 contains a half note C5, a quarter note D5, and a half note E5. Dynamics include *ppp*, *ff (ma troppo)*, and *(mf)*. There are also triangle and square symbols above the staff.

Handwritten musical notation for measures 54-55. Measure 54 starts with a treble clef, key signature of one flat, and a 7/4 time signature. It contains a half note G4, a quarter note A4, and a half note B4. Measure 55 contains a half note C5, a quarter note D5, and a half note E5. Dynamics include *mf*, *ppp*, *f*, *ppp*, *f*, *sfz*, and *pp*. There are also triangle and square symbols above the staff.

Handwritten musical notation for measures 56-57. Measure 56 starts with a treble clef, key signature of one flat, and a 7/4 time signature. It contains a half note G4, a quarter note A4, and a half note B4. Measure 57 contains a half note C5, a quarter note D5, and a half note E5. Dynamics include *ppp*, *ff*, *ppp*, *mf*, and *(p)*. There are also triangle and square symbols above the staff.

Handwritten musical notation for measures 58-59. Measure 58 starts with a treble clef, key signature of one flat, and a 7/4 time signature. It contains a half note G4, a quarter note A4, and a half note B4. Measure 59 contains a half note C5, a quarter note D5, and a half note E5. Dynamics include *ppp*, *ppp*, and *pp*. There are also triangle and square symbols above the staff.

Handwritten musical notation for measures 60-61. Measure 60 starts with a treble clef, key signature of one flat, and a 7/4 time signature. It contains a half note G4, a quarter note A4, and a half note B4. Measure 61 contains a half note C5, a quarter note D5, and a half note E5. Dynamics include *ppp*, *ppp*, and *pp*. There are also triangle and square symbols above the staff.

Handwritten musical notation for measures 62-63. Measure 62 starts with a treble clef, key signature of one flat, and a 7/4 time signature. It contains a half note G4, a quarter note A4, and a half note B4. Measure 63 contains a half note C5, a quarter note D5, and a half note E5. Dynamics include *ppp*, *ppp*, and *pp*. There are also triangle and square symbols above the staff.

V ♩ = 66

DENCH: BAGF/CLAR IN B $\flat$

13

Handwritten musical notation for measures 162-163. Measure 162 starts with a treble clef, a key signature of one flat (B $\flat$ ), and a 4/8 time signature. The melody consists of eighth and quarter notes. Measure 163 continues the melody with a quarter rest. Dynamics include *pp*, *ppp*, *mf*, and *ff*. A slur with a '5' indicates a quintuplet in measure 163.

Handwritten musical notation for measure 164. The melody features a quintuplet marked with a '5' and a slur. The bass line has a long note with a slur. Dynamics include *pp*.

Handwritten musical notation for measure 165. The melody has a quarter note followed by a quarter rest. The bass line has a long note with a slur. Dynamics include *pp* and *ppp*.

Handwritten musical notation for measure 166. The melody has a quarter note followed by a quarter rest. The bass line has a long note with a slur. Dynamics include *mf* and *mf SUBITO!*.

Handwritten musical notation for measure 167. The melody has a quarter note followed by a quarter rest. The bass line has a long note with a slur. Dynamics include *mf* and *mf SUBITO!*.

W ♩ = 58

Handwritten musical notation for measure 168. The melody starts with a treble clef, a key signature of one flat (B $\flat$ ), and a 4/8 time signature. The melody consists of eighth and quarter notes. Measure 169 continues the melody with a quarter rest. Dynamics include *mf* and *mf (SUBITO!)*.

Handwritten musical notation for measure 169. The melody has a quarter note followed by a quarter rest. The bass line has a long note with a slur. Dynamics include *mf* and *mf (SUBITO!)*.

