

énoncé

(1983–84)

horn

Chris Dench

FIERCE & UNREMITTING →

# ÉNONCÉ

M  
(*marcato* + detached) *ff* dim... 10:9 6:7 7:6 → ...*mf* e poco a poco

M  
...*cresc*... *mfz* dim... *cresc*... 7:6 9:6 (3:2) 10:12

M  
(*cresc*...) 12:11

M  
A (*cresc*...) 6:5 7:8

M  
B

M  
C

M  
*ff* *cresc*... <*sfz*> e *cresc*... 7:8

M  
(*cresc*...) 5:4 ...*fff*

M  
e

V.S.

(M = MUTE)

Printed by Photographic Service (Music Reproductions) Ltd., 62 Hatton Garden, London EC1N 8LR

©1984, United Music Publishers

Musical staff with notes and dynamics: *ff e cresc...*

Handwritten annotations:  $6:5$ ,  $7:8$

Musical staff with notes and dynamics: *(cresc...)*, *...fff*

Handwritten annotation:  $9:8$

Musical staff with notes and dynamics: *ff e cresc...*

Handwritten annotation:  $6:4$

Musical staff with notes and dynamics: *(cresc...)*, *MOLTO VIB.*, *sfz/ff*

Handwritten annotations:  $9:9$ ,  $10:8$ ,  $11:8$

Musical staff with notes and dynamics: *MOLTO VIB.*, *cresc...*, *sfz/ff e cresc...*

Handwritten annotations:  $11:8$ ,  $10:8$ ,  $9:8$ ,  $8:6$

Musical staff with notes and dynamics: *(fff)*, *cresc... fff (tutta forza)*

Handwritten annotations:  $8:10$ ,  $7:5$

Musical staff with notes and dynamics: *(fff)*

Handwritten annotations:  $9:7$ ,  $5:6$ ,  $6:4$

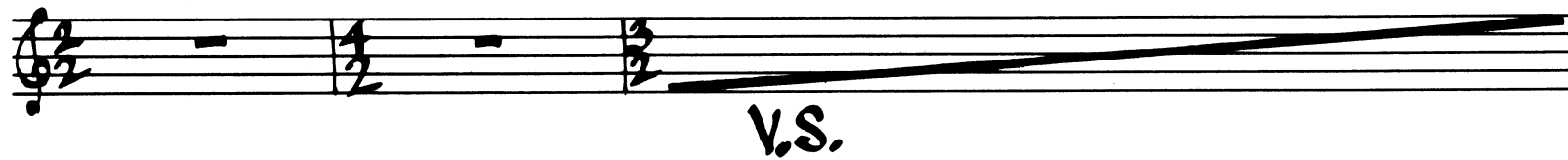
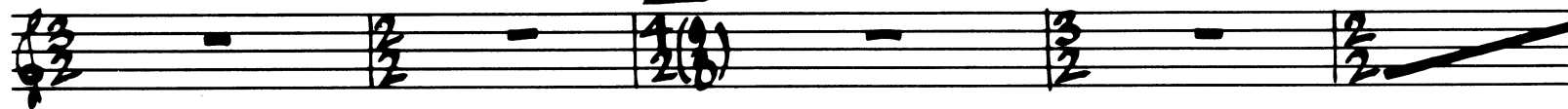
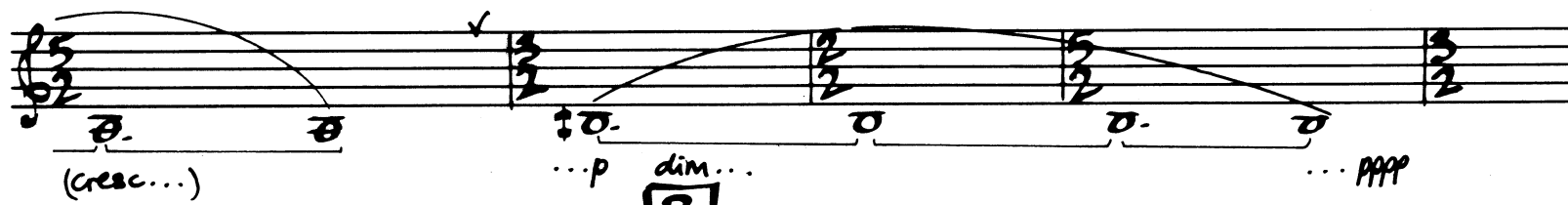
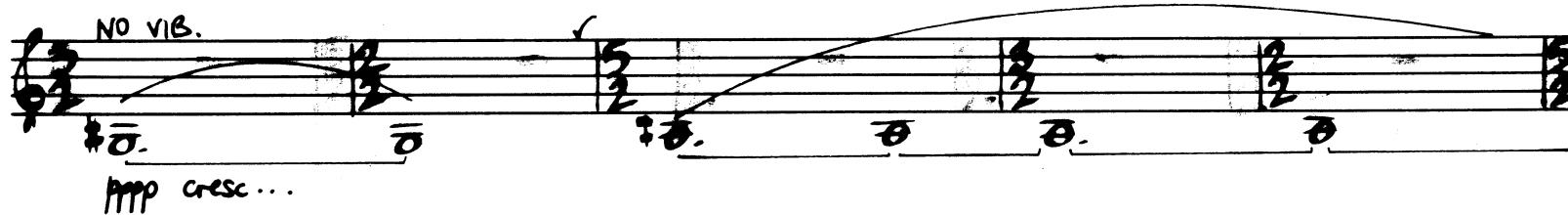
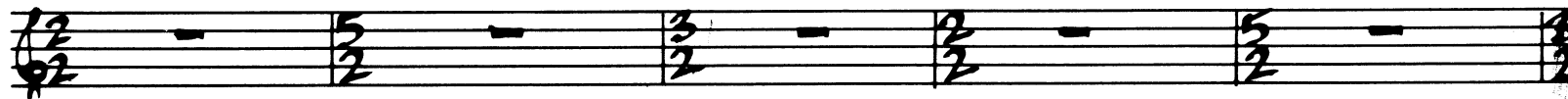
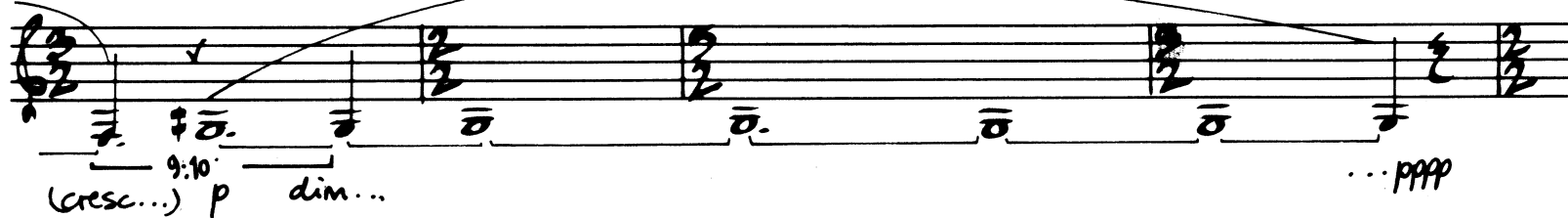
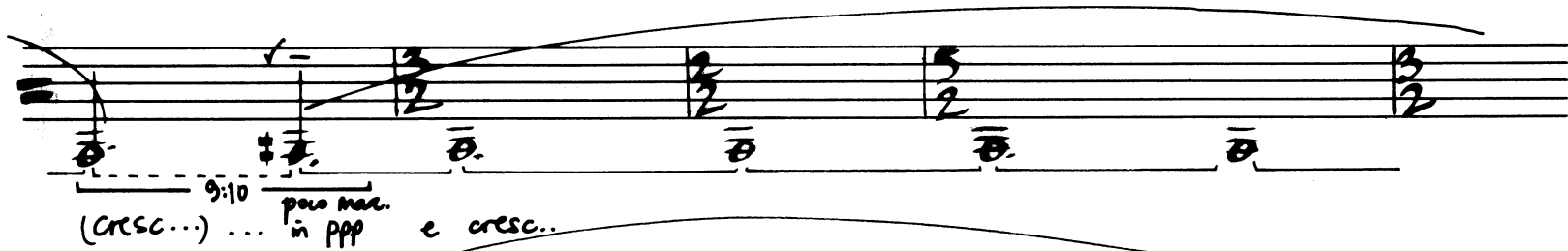
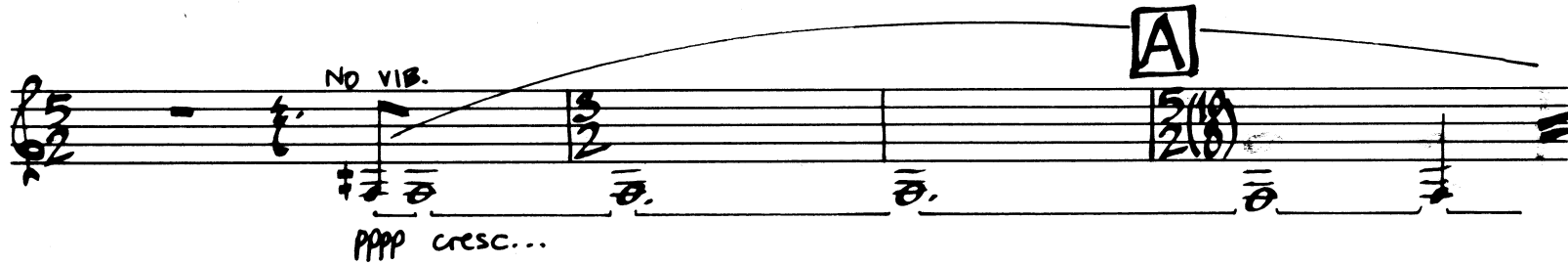
Musical staff with notes and dynamics: *(fff)*, *SOMBRE, EVOLVING INTO A COOL NEUTRALITY*, *REMOVE MUTE*, *molto dim... pp*

Handwritten annotations:  $6:4$ ,  $7:5$

Musical staff with notes and dynamics: *(fff)*

Musical staff with notes and dynamics: *NO VIB.*, *pppp cresc...*, *pp dim...*, *pppp*

Handwritten annotations:  $15:11$ ,  $7:5$



POCO VIB. ← ♩ = ♩ → COOLY NEUTRAL

pppp cresc... 10:9 10:9

(cresc...) 10:9 mf ppp POCO VIB.

ppp cresc... 7 1/2:9 7 1/2:9

(cresc...) 7 1/2:9 mfz! dim... ppp NORMAL VIBRATO

ppp cresc... 11:9 11:9 mfz dim... ppp

**C** ppp cresc...

mfz dim... 13:8 ppp cresc...

(cresc...) 13:8 mf dim... ppp cresc...

FROM HERE, INCREASINGLY LESS FROSTY

(cresc...) 13:8

**D** pp cresc... 11:14

mfz e cresc... 11:14 11:14 11:14 11:14 11:14 f

dim... pp 11:14 mfz/pp cresc...

ALL NOTES UNDER BROKEN SLUR: STOPPED!

(cresc...)  $\leq$ sfz dim... ...pp e cresc...

(cresc...) ...f  $\rightarrow$  mf

pp cresc... mf  $\rightarrow$  mf e cresc...  $\leq$ sfz dim... ...pp

(pp) cresc... mf dim... pp ...sfz! dim...

(dim...) ...pp cresc...  $\leq$ sfz  $\rightarrow$  cresc...  
mf

(cresc...) ...f e cresc... ff dim... p p cresc...

(cresc...) ...ff!  $\rightarrow$  f

**G** BREATHLESSLY!

p cresc... 11:8 11:8 11:8

cresc... ...sfz e cresc... 11:8 11:8 11:8 11:8 11:8

cresc... ...ff!  $\rightarrow$  f

V.S.

Musical score for Horn, measures 1-10. The score includes dynamic markings such as *sfz*, *p*, *cresc...*, *ff*, and *dim...*. Performance instructions include **HELD BACK** and **ACCEL.**. Rhythmic values like 13:8 and 13:12 are indicated above the notes.

Musical score for Horn, measures 11-15. The score includes dynamic markings such as *sfz*, *dim...*, *mf*, and *f*. Performance instructions include **A TEMPO** and *slightly detached.*. Rhythmic values like 7:8 and 9:8 are indicated above the notes.

Musical score for Horn, measures 16-18. This section consists of rests with rhythmic markings below the staff.

Musical score for Horn, measures 19-20. The score includes dynamic markings such as *mf*, *dim...*, and the performance instruction **AS FAST AS POSSIBLE**. Rhythmic values like 5:6, 15:14, and 3:2 are indicated above the notes.

Handwritten musical score for Horn, measures J1 to J8. The score includes various musical notations such as notes, rests, and dynamic markings like (dim...), mf, sfz, ff, and cresc... It also features performance instructions like 'Tacet al Fine'.

Measures J1-J2: (dim...), mf, sfz dim...

Measures J2-J3: (dim)...mf, mf cresc..., ff dim...

Measures J3-J4: dim...mf sfz dim..., mf cresc...

Measures J4-J5: (cresc...), fff dim..., f cresc...

Measures J5-J6: (cresc...), fff dim..., ff cresc..., fff dim...

Measures J6-J7: (dim)..., ff, fff dim..., ff, fff dim..., ff cresc...

Measures J7-J8: (cresc...), sfz, sfz dim...mf, sfz dim...mf, sfz dim...

Measures J8: (+) dim...mf, mf cresc..., f dim...mf

Tacet al Fine



