

énoncé

(1983–84)

viola

Chris Dench

ÉNONCÉ

♩ = 120 FIERCE & UNREMITTING

Sfz dim... 5:6 ...mf

S.P. [a] sfz > f cresc... 5:6 6:5

S.P. [b] 6:5 (cresc...) 7:5 9:6 ...ff

S.P. [c] 9:8 ff cresc...

S.P. 9:8 ...sfz... e cresc... 11:8 6:5 ARCO NAT. 3:2 3:2 3:2

[d] (cresc...) 7:9 6:4

[e] (cresc...) 6:4 5:4 SUL PONT. detached + marcato 9:7 5:6 ARCO NAT. 5:6 (cresc...) 7:9 9:10

Musical staff with notes, rests, and dynamic markings. Includes *(cresc...)* and *SUL PONT.* with a box containing the letter 'f'. Time signatures 6:7, 7:6, 8:10, and 9:10 are indicated below the staff.

Musical staff with notes, rests, and dynamic markings. Includes *S.P.*, *ARCO NAT.*, *SUL PONT.*, and a box containing the letter 'f'. Time signatures 9:10, 8:10, 7:6, and 12:11 are indicated below the staff.

Musical staff with notes, rests, and dynamic markings. Includes *S.P.* and *(cresc...)*. Time signatures 5:4, 6:4, and 0:7 are indicated below the staff.

Musical staff with notes, rests, and dynamic markings. Includes *ARCO NAT.*, *SUL PONT.*, and a box containing the letter 'g'. Time signatures 6:4, 10:7, 5:6, and 6:5 are indicated below the staff.

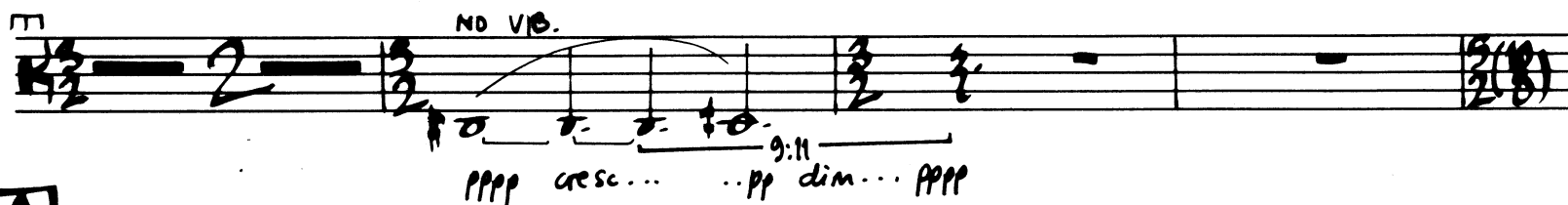
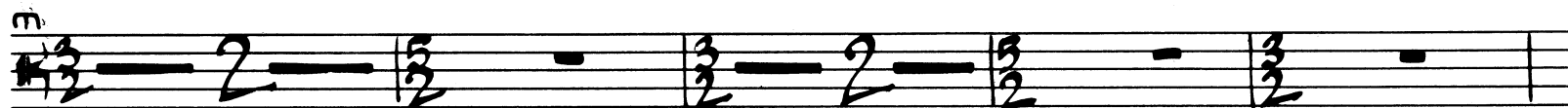
Musical staff with notes, rests, and dynamic markings. Includes *S.P.* and *(cresc...)*. Time signatures 7:6, 9:8, 10:12, 11:4, and 5:4 are indicated below the staff.

Musical staff with notes, rests, and dynamic markings. Includes *dim...*, *ff*, *cresc...*, *sffz*, *dim...*, *ff*, *sffz*, *dim...*, *7:6*, *ff*, and *molto cresc...*. Time signature 5:4 is indicated below the staff.

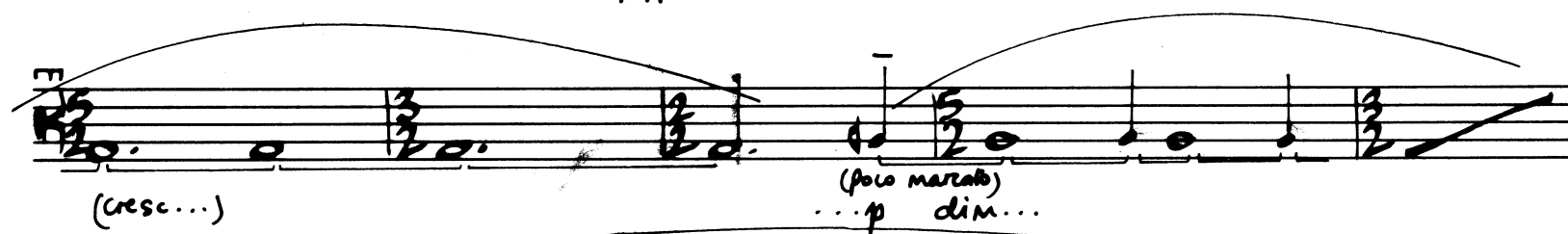
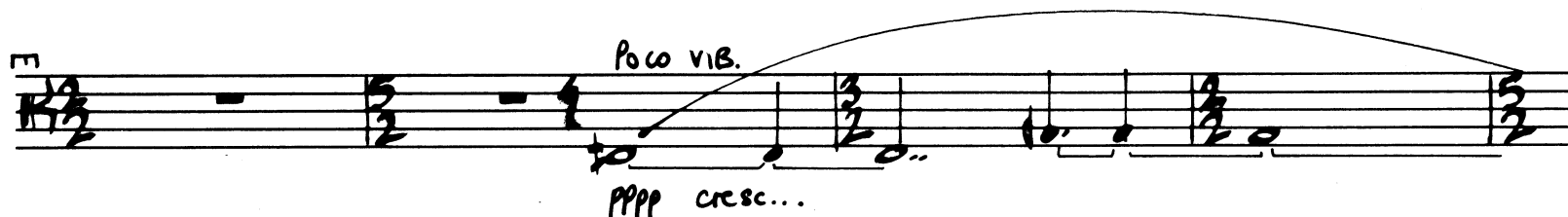
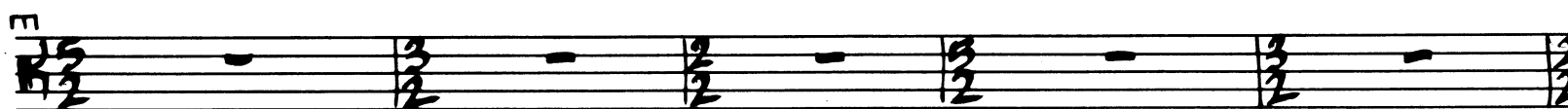
Musical staff with notes, rests, and dynamic markings. Includes a box containing the letter 'h' and *fff (tutta forza)*. Time signatures 10:7 and 6:5 are indicated below the staff.

Musical staff with notes, rests, and dynamic markings. Includes *SUL PONT.* and *(fff)*. Time signatures 6:5, 9:8, 4:5, 7:5, 6:4, and 7:5 are indicated below the staff.

Musical staff with notes, rests, and dynamic markings. Includes a box containing the letter 'i', *SOMBRE, EVOLVING INTO A COOL NEUTRALITY.*, *(fff)*, *dim...*, *...pp*, and *ARCO NAT.*. Time signature 7:5 is indicated below the staff.



A



(dim...) ...ppp
 COOLY NEUTRAL (NOT LUCUBRIOUS!)
 poco VIB
 pp cresc...
 mfz e cresc... (poco marcato)
 (cresc...)
 ...mf dim...
 ...ppp
 [C]
 NORMAL VIB
 pp cresc...
 (cresc.) mfz
 17:16 17:16 17:16
 mfz dim... (poco marcato) ...pp
 mf => mf dim...
 pp cresc...
 7:8 7:8 7:8
 mfz p
 mfz dim...
 13:8 ...ppp cresc...
 [D]
 (cresc...)
 13:14 13:14 13:14 13:14
 ...f dim...
 ...pp/sfz dim... pp cresc...
 (cresc...)
 ...mfz
 pp cresc...
 9:7 9:7 9:7
 mf dim...
 (dim) ...pp/sfz dim.../sfz dim... pp cresc...
 (gliss)
 9:7 9:7 9:7
 ...sfz dim... pp

Handwritten musical score for Viola, page 6. The score consists of ten staves of music with various annotations including dynamics (pp, p, mf, f, sfz, dim, cresc), articulation (gliss, NAT, S. PONT.), and performance instructions (ARCO NAT, REMOVE MUTE, BREATHLESSLY!). Fingerings and bowings are indicated throughout the piece.

Staff 1: *pp cresc...* (gliss) ... *f dim...*

Staff 2: (dim...) ... *pp/sfz dim... sfz dim... pp cresc...*

Staff 3: (cresc...) ... *sfz! mf*

Staff 4: (ARCO NAT) → S. PONT. → ARCO NAT. (gliss) *p cresc...* *sfz dim...* ... *p cresc...*

Staff 5: (cresc) ... *mfz p cresc...* ... *sfz dim...* ... *pp/sfz*

Staff 6: *dim...* ... *p* REMOVE MUTE. ... *mfz p cresc...*

Staff 7: (cresc...) *mfz dim...* ... *p cresc...* NAT. → S. PONT. (gliss) *sfz/p* *cresc...*

Staff 8: ARCO NAT *sfz dim...* *p cresc...* ... *f dim...*

Staff 9: **G** BREATHLESSLY! (dim...) ... *p/sfz p* ... *p cresc... mf/p*

Staff 10: *cresc...* ... *f/mf cresc... f cresc... sfz dim...* ... *p/sfz p cresc...*

(cresc...) 6:4 f molto dim... p/sfz! dim... 6:4 ...p 5:8 ff dim...
 dim... p cresc... ff dim... p cresc... 3:2 3:2 ...sfz dim...
 ...p (gliss with mll) (no gliss)
 p cresc... mf... f...
 (cresc...) ff dim... 15:12 mf < ff dim... mf < ff dim... p cresc...
 ACCEL... (to [I]) * (OR NOT HARMONICS, IF NECESSARY)
 (cresc.) sfz! sfz! (ACCEL...) I A TEMPO
 (cresc...) 13:12 13:12 ...fff! sfz dim... mfz dim... sfz dim...
 sfz dim... sfz dim... sfz dim...
 mfz dim... mfz dim... mfz dim... GRADUALLY MORE DETACHED
 mfz dim (pochiss. staccato)
 mfz dim... mfz p dim... p dim... 7:8 7:8 7:8 7:8 p dim... pp

AS FAST AS POSSIBLE. $\text{♩} = 100-120$.

J0 mfz dim... mfz dim...

J1 (dim...) mf sfz dim... mf

J2 mf cresc sfz sfz dim... mf cresc... ff dim...

J3 (dim...) mf cresc... fff dim...

J4 (dim...) f cresc... fff dim... f cresc... fff dim... f cresc...

J5 (cresc...) ffff dim... ff cresc...

J6 (cresc...) ffff dim... ff

J7 (ff) cresc... $\text{fff} > \text{ff}$

(17) *lento*
ff *fff dim...* 3:2 *mf* *ff* *mf* *cresc...*
15:14 3:2 15:14 15:14

(18) 15:14 3:2
(cresc...) *ff e dim. poco a poco...*

(19) 7:6 3:2 7:6 7:6
mf *f* *dim...* *mf*

Tacet al fine.

